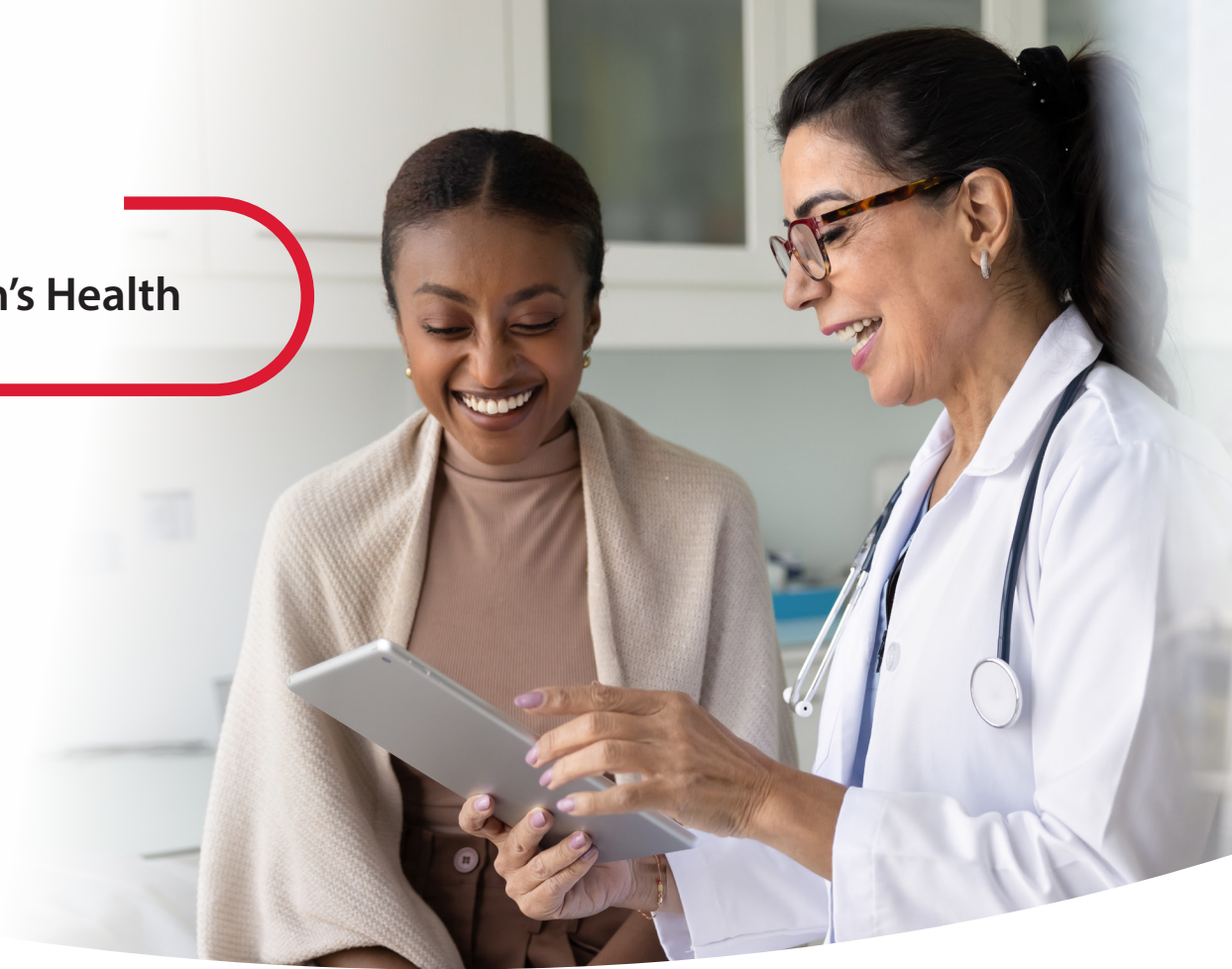


Women's Health



Pessary Products

from Premier® Medical

Offer your patients support and peace of mind with Premier® pessaries for non-surgical management of uterine prolapse, cystocele and rectocele.

- ✓ 100% silicone
- ✓ Easy to insert, remove and clean
- ✓ Available in most popular styles and sizes

Available through your authorized dealer.



premiermedicalco.com/promise

premier®

Premier® Medical Products • 888-670-6100 • premiermedicalco.com

©2025 Premier Medical | All Rights Reserved

Ring Pessary - This very common pessary most often is used for first- to second-degree prolapse. Ring Pessaries, available in nine sizes, are configured without and with support. Ring Pessaries with support also can be used on an accompanying cystocele. Application is accomplished easily simply by folding the ring before insertion.



	Diameter	Ring w/o Support	Ring w/ Support
Size	(inches)	Item #	Item #
#1	2.00	1040111	1040101
#2	2.25	1040112	1040102
#3	2.50	1040113	1040103
#4	2.75	1040114	1040104
#5	3.00	1040115	1040105
#6	3.25	1040116	1040106
#7	3.50	1040117	1040107
#8	3.75	1040118	1040108

Gellhorn Pessary - Used for a second- to third-degree prolapse or procidentia. With drainage holes in the base, Gellhorn Pessaries are available in nine sizes. The knob of the gellhorn easily folds over for insertion and when properly inserted, rests on the posterior vaginal wall to provide support.



	Diameter	Gellhorn
Size	(inches)	Item #
#1	1.75	1040201
#2	2.00	1040202
#3	2.25	1040203
#4	2.50	1040204
#5	2.75	1040205
#6	3.00	1040206
#7	3.25	1040207
#8	3.50	1040208

Cube Pessary - Designed for second- or third-degree prolapse or procidentia, as well as a cystocele and rectocele. Cube Pessaries feature drainage holes. Additionally, a silicone tie affixed to each cube aids in removal. Cube Pessaries are available in 10 sizes. Sizes range from 2.5cm (1") O.D. to 7.5cm (3") O.D.



	Width	Cube w/ Holes
Size	(cm)	Item #
#0	2.5	1040400
#1	2.9	1040401
#2	3.3	1040402
#3	3.7	1040403
#4	4.1	1040404
#5	4.5	1040405
#6	5.0	1040406

Donut Pessary - For use with third-degree prolapse or procidentia as well as cystocele and rectocele. Donut Pessaries, while having a substantial amount of material between the inside and outside diameter, are made of soft material that is compressed easily to aid in insertion. The donut is available in seven different sizes.



	Diameter	Donut
Size	(inches)	Item #
#0	2.00	1040300
#1	2.25	1040301
#2	2.50	1040302
#3	2.75	1040303
#4	3.00	1040304
#5	3.25	1040305
#6	3.50	1040306

Item numbers listed in bold text indicate most popular sizes.



1040600 Pessary Fitting Set - Set of six different rings (#1 through #6) used in pessary size selection for individual patients. The Fitting Set comes with a cross-reference chart that translates ring size into corresponding size of other pessary styles.

premier®



Premier® Medical Products • 1710 Romano Drive, Plymouth Meeting, PA 19462, USA
Phone 888-670-6100 • 610-239-6000 • Fax 610-239-6171 • premiermedicalco.com • E-mail: info@premiermedicalco.com